

ASSA ABLOY

Efficient & Safe
Loading dock Equipment

ASSA ABLOY
Entrance Systems

assaabloyentrance.com/in

Experience a safer
and more open world





The global leader in access solutions

The ASSA ABLOY Group is the global leader in access solutions. Every day, we help billions of people experience a more open world with innovative solutions that enable safe, secure, and convenient access to physical and digital places.

When high-quality equals sustainability



With our commitment to high-quality service, we ensure sustainability throughout the lifecycle of each product. Regular servicing and product care maintain a product's energy-saving properties while promoting safe operation through well-maintained materials.

Ensure fast, safe and energy efficient operations



Your business relies on successful loading and unloading every day. Distribution and logistics centers need entrances which ensure safe, fast and sustainable loading and unloading at all times of day. We provide you the solutions with optimum efficiency.

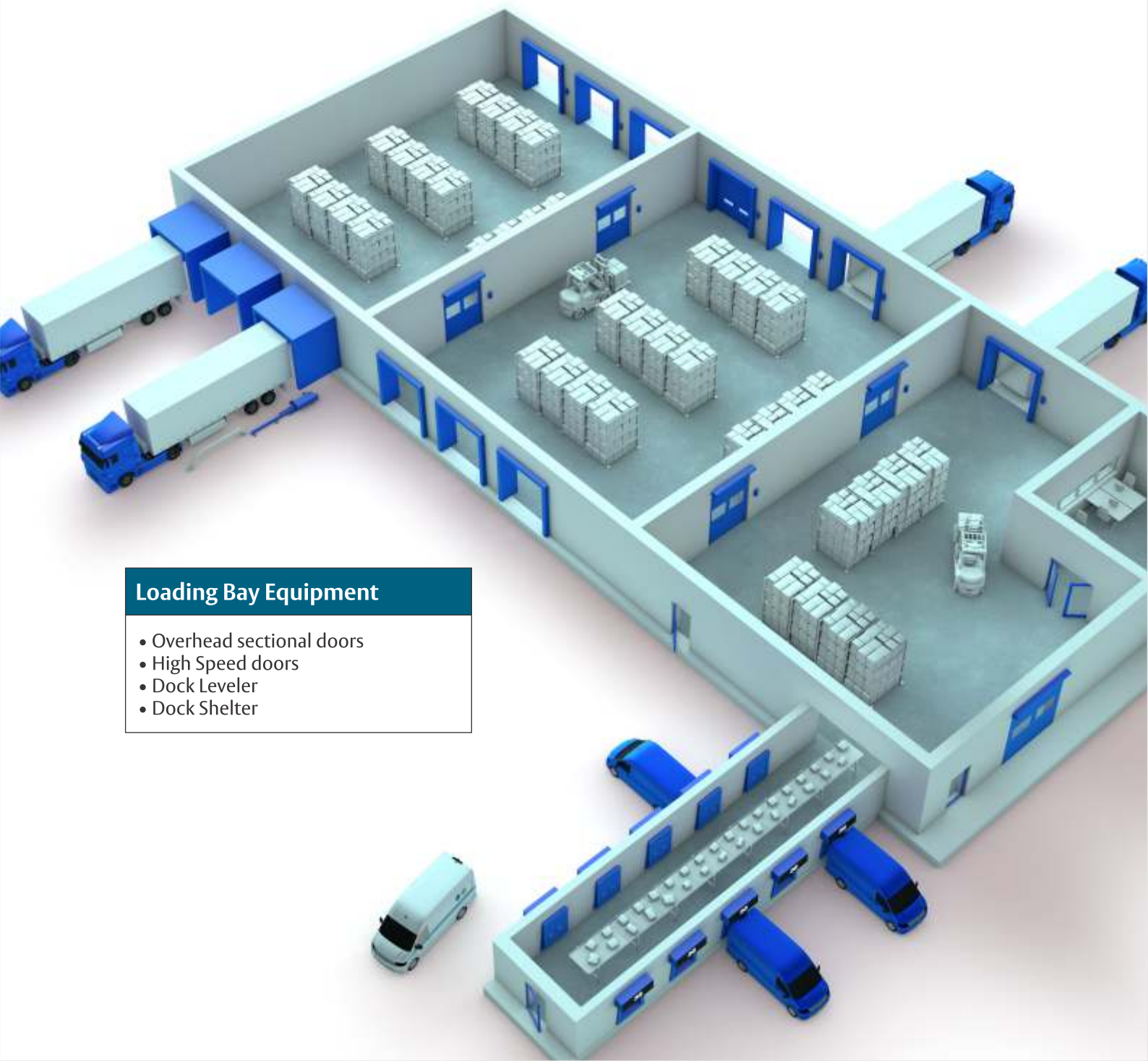
Meeting the operational requirements of your building and your business



When you need to maintain the speed and quality, you need infrastructure that is robust, fast and safe. When it comes to temperature controlled warehouses, this is even more crucial to maintain right temperature with ease of operation. We make sure that we take care of your needs.

We help you to open up for an efficient flow of goods and people with convenient, sustainable and innovative entrance and security solutions. Solutions that everyday make you feel safe—so, you can experience a more open world.





Loading Bay Equipment

- Overhead sectional doors
- High Speed doors
- Dock Leveler
- Dock Shelter

Overhead Sectional Doors

Industrial Door (Overhead Sectional Door)

Overhead sectional doors are widely used in industrial applications for external as well as internal use. Ease with which the doors with inbuilt safety features operates, allows for efficient movement of material with in building (production area, utility area etc.,) and most commonly at dock area (loading & unloading point).

The Overhead sectional doors are modular in construction; door leaf consists of horizontally connected panels and opens vertically. The extreme operations and frequent use, demands high on quality and easy operation. It also has best aesthetic properties in comparison to traditional industrial doors.

With ASSA ABLOY overhead sectional doors, you can bank on the optimum safety and durability from the product, the delivery, installation and the services. With a credible brand-ASSA ABLOY, you know you are buying the best and leave behind your worries for us to handle.

General Features:

- It is made of 40mm thick Pre Painted galvanized steel sandwich panels with 500mm height.
- The panels are fitted with an additional integrated steel reinforcement strip.
- Available in normal lift, vertical lift and high lift version.
- High insulation value in the highest class of the CE standards, considerably reduce the energy consumption.
- Overhead sectional doors in completely closed position or during operation can withstand maximum wind speed of 118 Km/ H (12 Beaufort).
- Safety features like spring break safety device, slack cable safety device, cable break safety device, bottom safety edge.



WHY ASSA ABLOY:

We offer you numerous reasons to choose us:

1. **Safety-** Your safety is of utmost importance to us. A series of safety features has been added to our overhead sectional doors as we really care for your safety. Bottom safety edge is the standard safety feature, that makes your door fully automated. Another safety feature which is embedded in the motor is, that at the time of sudden power failure, the door will stop automatically. There are other safety devices also that come with our standard product like spring break safety device, cable break safety device (6 times over dimensioned) and slack cable safety device (2 nos.). Additional optional safety accessories can be added based on your requirement.
2. **Durability/Panel configuration:** Besides increasing the operational efficiency, what one strives for is the trouble-free operations for the longest period of time. The standard thickness of panel is 40mm with 500mm high. These panels are perfectly protected against corrosion, due to the high quality materials which are galvanized and pre-coated. This guarantees the long life even in tough weather conditions.
3. **Double Glazing in Vision panel/Highly Scratch Resistant:** The vision panels are made from high quality engineered plastic frame with click-on feature. There is no riveting on frames with clean appearance enhances the clear view. The double glazing in transparent scratch-resistant acrylic minimizes the thermal losses.
4. **Thermal insulation:** ASSA ABLOY overhead sectional doors are well insulated with thermal transmittance from 1.30W/m²K to 1.60W/m²K depending upon the size of the door.
5. **Finger protection:** Finger protection is the embedded design feature which is available irrespective of the height of the door.
6. **Choices/Flexibility:** We offer overhead sectional doors in four types of lift systems; Normal Lift (NL), Vertical Lift (VL) and High Lift (HL) versions. This is to suit the need of customers as per their site requirements.

Door Automation:

Sl No.	Parameters	Values
1	Motor output	0.75kW
2	Operating voltage	230V/1Ph/50 Hz
3	Control voltage	24V
4	Driving torque	60Nm
5	Driving motor speed	24min ⁻¹
6	Type of protection	IP 54

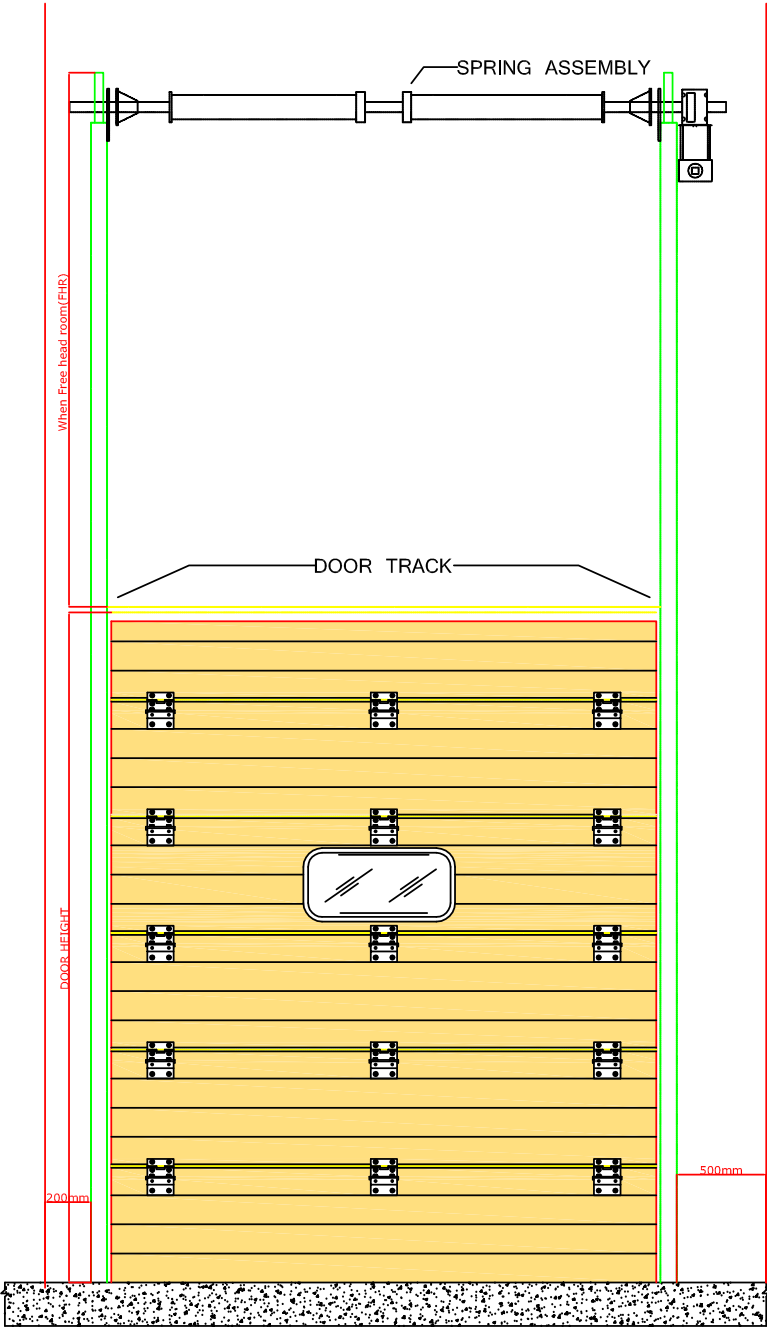
Technical specification:

Features	Standard
Sizes	Varying from 2000mm(W)x5000mm(H)
Thermal insulation values	1.60W/m ² K
Thickness of panel	40mm, 500mm high
Air permeability	Class 3
Resistance to water penetration	Class 3
Resistance to wind load	Class 4
Vision panel	Shape- Oval Size- 663x343mm
Lift System	Normal Lift High Lift Vertical Lift
Colors	RAL 9002
Operational accessories	Push button / Radar / Pull cord
Safety accessories	Bottom safety edge Spring break safety device Cable break safety device Slack cable safety device

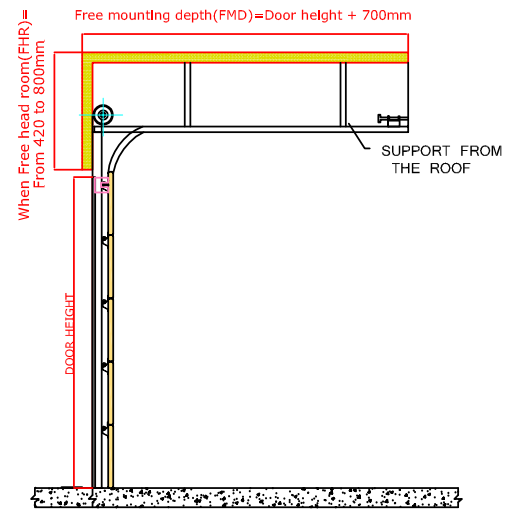


Technical Drawing

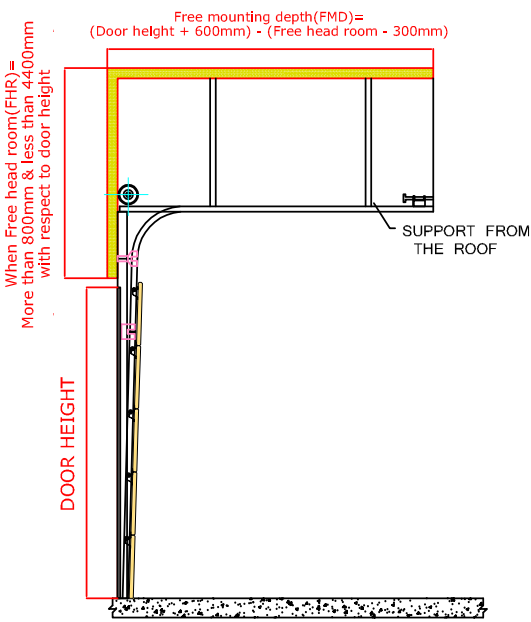
Overhead Sectional Door Lift System



ELEVATION VIEW VERTICAL LIFT SYSTEM



SECTION VIEW NORMAL LIFT SYSTEM



SECTION VIEW HIGH LIFT SYSTEM

Swing Lip Dock Leveler

Swing lip/Radius Lip dock leveler by ASSA ABLOY is the Electro-hydraulic dock leveler. Our Dock leveler are CE certified, conforming to EN 1398 standards.



How it works:

The swing lip dock leveler is operated with only one push button. By keeping the push button pressed, the platform will go up from its rest position. When the highest position is reached, the lip will move out. When the push button is released, the platform and lip will descend automatically to the level of the vehicle bed. During loading and unloading, the suspension of the vehicle is automatically followed by the leveler.

After the loading and unloading process has been completed, by continuously pressing the 'Push button', the dock leveler can be returned to the rest position. In this position, the platform and the lip rest onto robust steel lip keepers to prevent the platform from lowering unexpectedly as a result of load stress by cross traffic. It also has a Red Color rotary switch on Control Panel to disconnect the power supply in case of emergency.

Materials used:

Platform and lip are made of high-quality tear plate: 6/8 mm for the platform and 10/11 mm for the lip. Depending on the width, the platform is reinforced with eight profiles in case of 2000 mm in longitudinal direction. These profiles allow the platform top to 'twist' and compensate for vehicle 'tilt' caused by off-set loads within the vehicle. The lip will remain in contact with the vehicle bed.

The rear of the platform is connected to the lower frame by means of three hinges. The pins of the hinges are made of drawn steel rods which can easily withstand the applied forces. Similar pins are used for the lip hinge at the front of the platform top.

Hydraulic System:

The platform is powered by hydraulic cylinder with chrome hardened plunger and double seal. The swing lip is powered by a separate self-dampening cylinder. The hydraulic system is completely closed and cannot, even under the most extreme circumstances, be affected by dust or dirt.

The compact hydraulic power pack is positioned under the platform to prevent it from any possible damages. All these characteristics ensure a safe hydraulic system with a long life span and a minimum of maintenance.

Sizes:

For the standard types with a height of 600mm, a large variety platform sizes are available. The swing lip dock leveler can also be supplied to customer specifications on special request.

Door Automation:

Platform length	DL Height	Level Above Dock	Level Below Dock
2500	600	350	300
3000	600	350	300

Standard safety provisions:

- Full hydraulic safety stop
- Non retractable sliding toe-guards on both sides.
- Robust steel lip keepers for transverse movements (cross traffic)
- Black/yellow safety markings
- Non-removable maintenance strut
- Motor safeguard by means of a thermal relay
- Control panel instruction symbols

Platform width: 2000mm, 2200mm, 2250mm (all dimensions in mm)

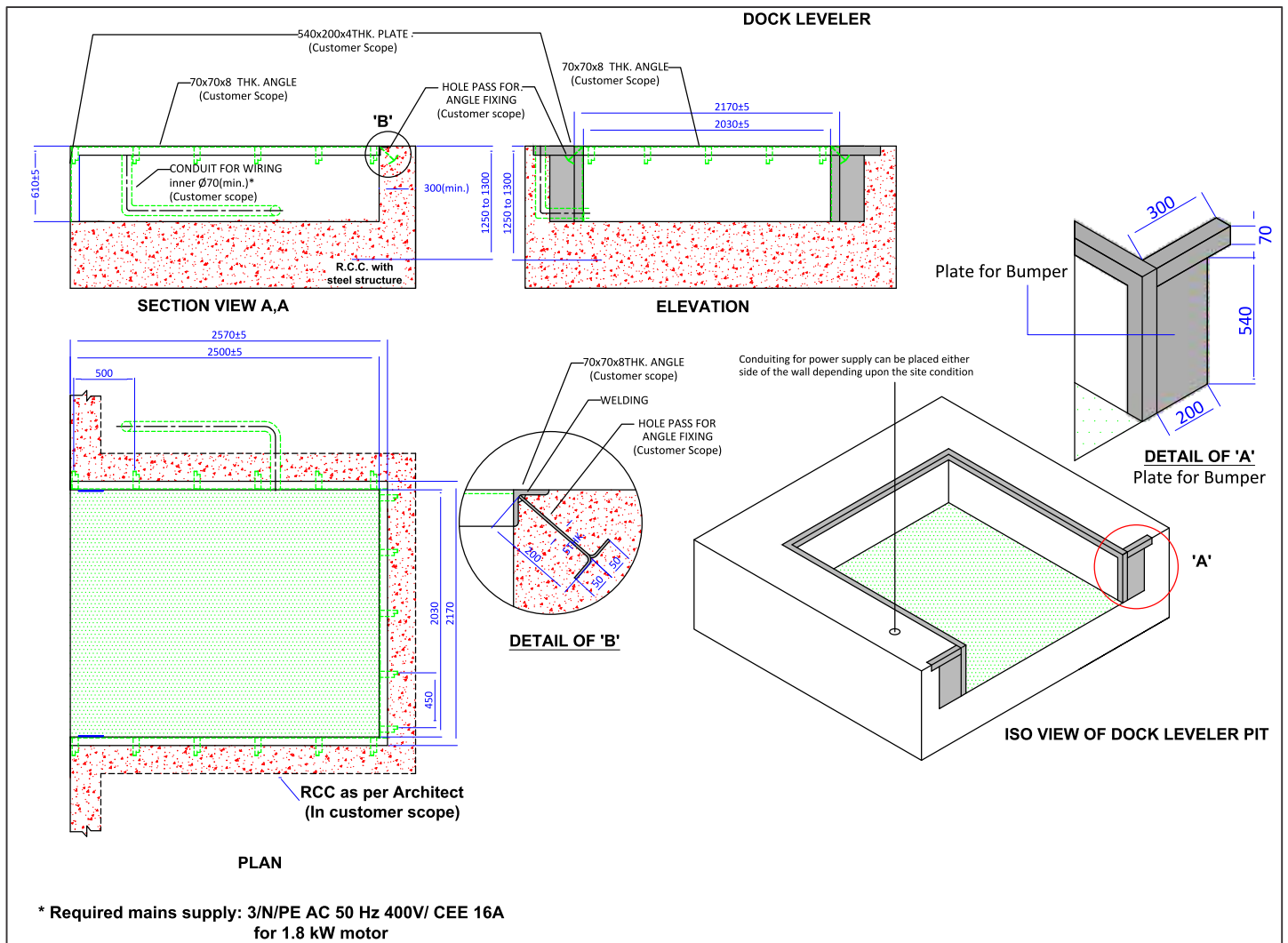
Technical Specifications:

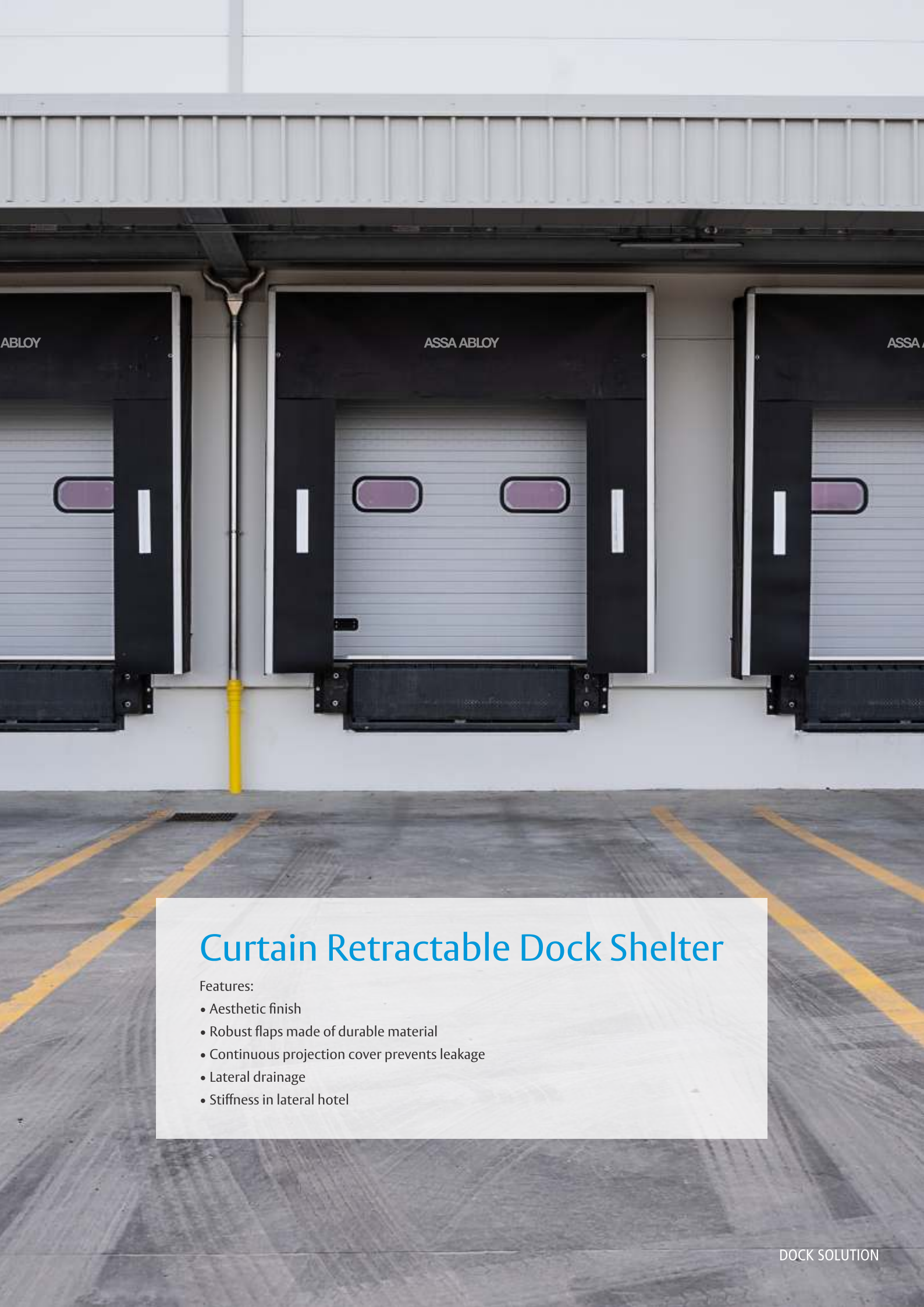
Standards	CE
Capacity (EN 1398)	60kN
Dock leveler height	600mm
Lip length	400mm
Lip angle	(±4) 45mm
Motor	1.1 kW
Power supply	400V/ 50 Hz/2.5A
Control current	24 VDC
Protection class	IP 55
Working pressure	± 100 bar
Outside diameter main cylinder	50mm
Outside diameter lip cylinder	45mm
Operating temperatures	-30°C and +50°
Standard color	RAL 9005 Black

OPTIONS:

- Higher capacity
- Air seals on two sides of platforms
- Double cylinder
- RAL 5010 Blue
- Tapered lip on both sides
- Greater lip length of 500mm
- Dock leveler-/door interlocking
- Rubber/Steel bumper

Dock leveler Pit drawing





Curtain Retractable Dock Shelter

Features:

- Aesthetic finish
- Robust flaps made of durable material
- Continuous projection cover prevents leakage
- Lateral drainage
- Stiffness in lateral hotel

Technical Specification

Application:

The curtain dock shelter is mainly used in situations where an optimal sealing is required and where there are large differences in the vehicle bed.

Materials used:

The curtain dock shelter, front projection model consists of a stable construction with an anodized and extruded aluminum front frame and an aluminum rear frame. The solid and rigid construction provides an optimal strength during side loading, ensuring that the bottom sections do not deflect outwards. The frames are connected by means of hinged arms. These ensures that the dock shelter can retract in the event of inaccurate docking, to prevent damage to the dock shelter and vehicle.

The projection is closed by means of projection cover made from PVC coated waterproof fabric. The slant top ensures there is no water accumulation and rain water is efficiently drained off from the dock shelter. This ensures that no water will enter the door opening during loading and unloading.

Curtain Specifications:

Curtain specifications		Top Curtain	Side Curtain
Total Weight (gr/m ²)		3500	3500
Coating	Top coat/ Rear coat	0.5mm Derflex 85 with matt finish	0.5mm Derflex 85 with matt finish
Tensile strength longitudinal (N/mm)	ISO 283	240	240
Tear resistance	ISO 505	Length ≥ 850 N Width ≥ 750 N	Length ≥ 850 N Width ≥ 750 N
Temperature resistance		Maximum 90°C Minimum -30°C	Maximum 90°C Minimum -30°C

Type	Side curtains (gr/m ²)	Top curtain (gr/m ²)
Double layered Polyester fabric with PVC Coating	3500	3500

The curtains are made from a polyester fibre and PVC top coating. Due to the special weaving of the side curtains, these are flexible in longitudinal direction, whereas the width functions as a stable curtain. These characteristics result in an optimal sealing of the vehicle during docking, and simultaneously ensures a maximum flexibility, mainly in relation to the top curtains. All curtains are finishes with a wear-resistant, hard antistatic PVC top coating. The material has excellent mechanical characteristics, to ensure proper functioning under all circumstances.

Dimensions:

The curtain dock shelter with its standard dimensions is suitable for central docked vehicles, with a width of 2300 to 2500 mm and a height of 3600 to 4000mm.

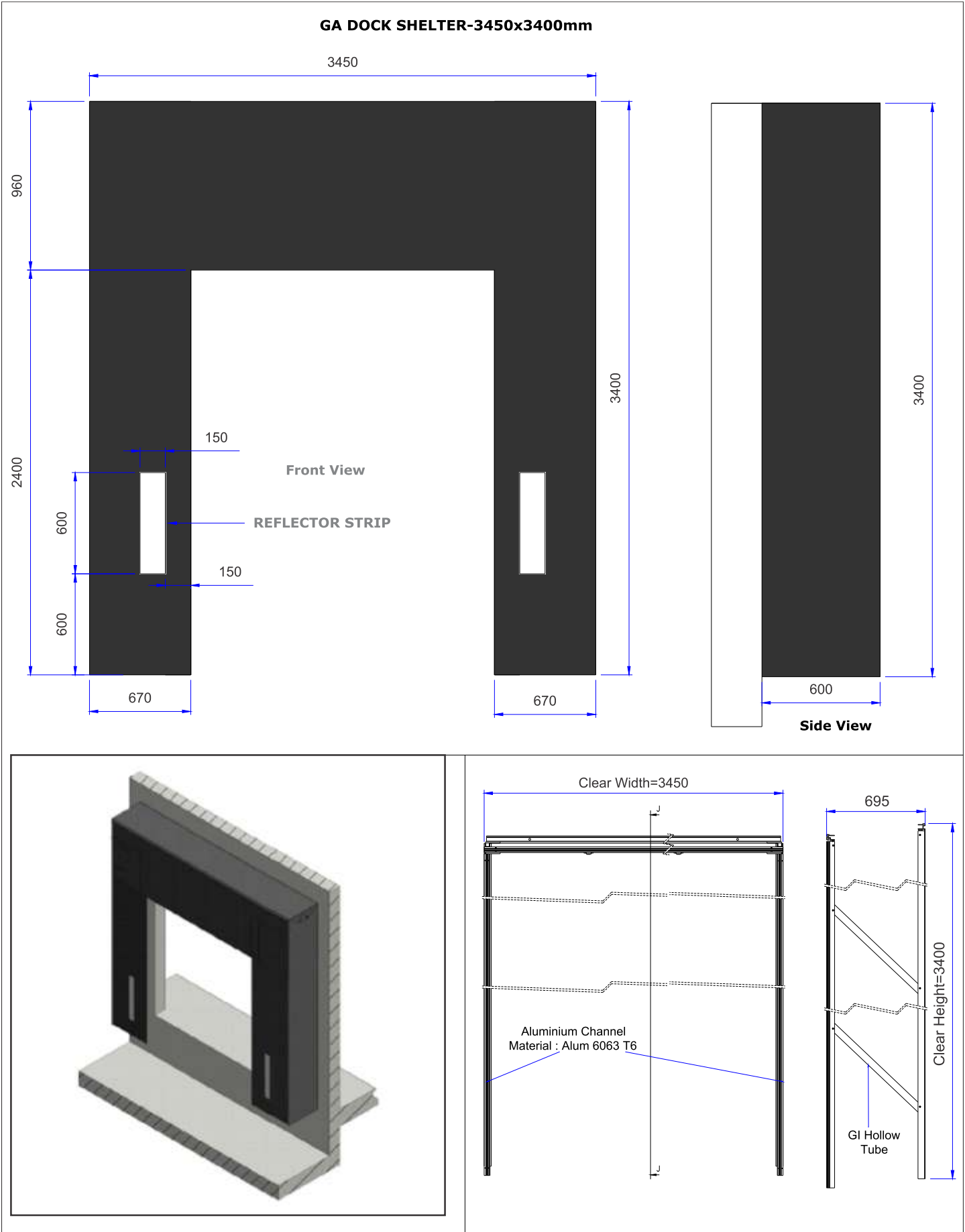
Technical Specifications:

Width	3450mm
Height	3400mm
Front projection depth (front projection model)	600mm
Width side curtain (incl alu profiles)	680mm
Height top curtain (incl alu profiles)	970mm
Curtain models	Black, 3500 gr/m2
Standard color	Black with white warning stripes

OPTIONS: Special Dimension on request

Technical Drawing

Curtain Retractable Dock Shelter Drawing



High Speed Roll up Door

Application Areas

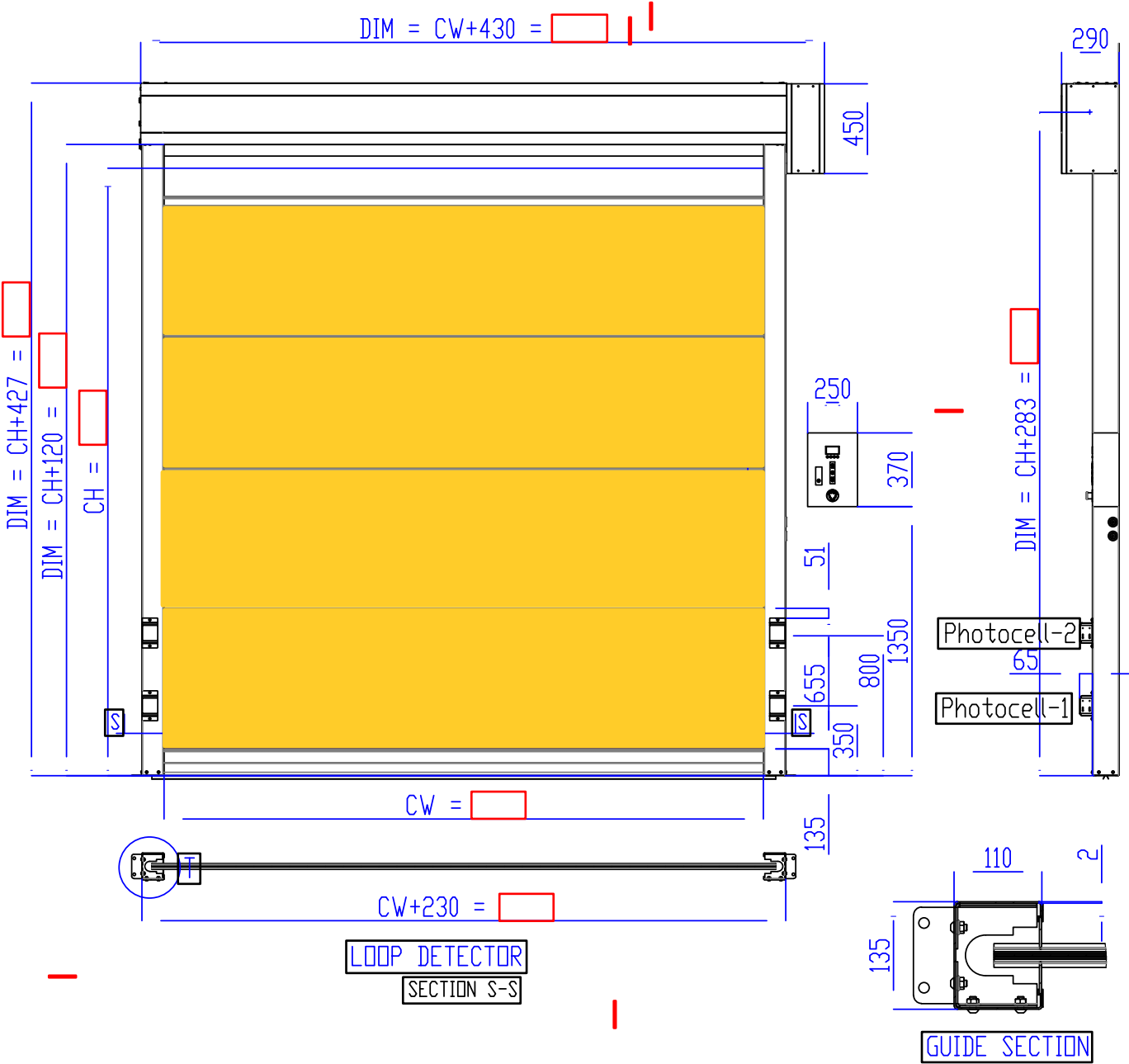
- Small – Medium Packaging Units
- Cold Storages
- Logistics/Warehouse area



Technical Specification

Size (WXH mm)	Min: 1500 x 2000, Max: 3700 x 5000
Material	<ul style="list-style-type: none">Guides: 2mm thick GI, powder coated in RAL 9002Canopy: 1.5mm thick GI, powder coated in RAL 9002Motor Cover: 1.5mm thick GI, powder coated in RAL 9002
Curtain Thickness	<ul style="list-style-type: none">1.3 mm thick, 1700 gsm.Color options: RAL 5010 (Blue), RAL 1018 (Yellow)
Control Box	Servo control, 230 Vac
Speed	<ul style="list-style-type: none">Opening speed: Upto 2.0m/sClosing Speed: 0.8m/sUpto 1000 operations per day, tested for 500,000 cycles
Motor	0.75kW & 1.5kW
Wind force	Upto 90-96 kmph
Safety Features	<ul style="list-style-type: none">PhotocellBottom Safety Edge
Opening accessories	<ul style="list-style-type: none">Push buttonEmergency opening by hand crank
Optional Control accessories	<ul style="list-style-type: none">Over Head Opening Radar SensorRemote ControlPull Cord SwitchMagnetic LoopExtra Push ButtonLight Grill

High Speed Roll Up Door



Services

Too often, manufacturers view their service is operations as ancillary businesses, separate from and by no means equal in strategic or operational importance to the "core" product business. We, at Assa Abloy don't consider the services as just another function of organizational chart but a lifeline to our business.

Assa Abloy don't have Contracts, we prefer to have relationships and these relationships bring customer intimacy. Our service relationship agreement demonstrates our desire to deliver the best possible service at all times. We want you to think of the equipment we supply to you as being invisible, doing its job, day after day, and opening doors to your business and your customers, leaving Assa Abloy to ensure it operates correctly for many trouble-free years.

Assa Abloy trained staff in installation and maintenance service are well equipped and strategically located to minimize response time when you need us. Our dedicated service team is accessible at your doorstep 24x7. We serve to even the remote corners of country spanning 3000 pin codes across India.

We care for our customers and hence provide national toll free number to contact our dedicated customer care team.



OUR CLIENTS

Wipro Pari Anthea Pharma CARRIER
BEARDSSELL FRICK INDIA DABUR
HATSUN AGRO DB SCHENKER
Bodhe Infra TRPL PAGRO FOODS
P&G GATI SAVLA FOODS
JINDAL MEC TEC BALMER & LAWRIE
HIND TERMINAL LLYOD
HINDUSTAN UNILEVER JW LOGISTICS
GENETCO SNOWMAN
AL KABEER
LARSEN & TOUBRO ISRO
DOMINO'S SUBBROS
CARREFOUR DECATHLON
DEV BHUMI COLD CHAIN CADBURY
CARGO AIRPORT
GOPALJEE DAIRY BLUESTAR
INDOSPACE Z COLDMAN
NILKAMAL H NAGAHANUMAN
PERFETTI S ALLCARGO
LODHA HORIZON INTERNATIONAL PARK
NAMASTE INDIA AMCOR AMROON FOODS
CARYCORE



The ASSA ABLOY Group is the global leader in access solutions.
Every day, we help billions of people to experience a more open world.

ASSA ABLOY
Entrance Systems

ASSA ABLOY Entrance Systems provides solutions for efficient and safe flow of goods and people. Our offering includes a wide range of automated pedestrian, industrial and residential doors, loading dock equipment, perimeter fencing and service.

ASSA ABLOY
Entrance Systems

8-A, Udyog Vihar, Part I & II, Greater Noida (U.P.)-201306

Tel: +91-120-4751000

Mob: +91 88829 16003 | +91 95356 77117

Email: info.in.entrance@assaabloy.com

Website: www.assaabloyentrance.com/in

Follow us:



Please enter ASSA ABLOY Entrance
in the channel's search field.