



GWS FIRE DOORS

DOORS TO KEEP YOU SAFE

DOORS FOR

Residential, Commercial, Industrial, Applications



**FIRE DOORS UNDER:
IS - STD, BS - STD**

About us

“We create future architecture marvels by building them today.”

Glass Wall Systems (I) Pvt Ltd is India's leading facade fabricator. We provide turnkey architectural facade solutions where we translate the vision of our clients into reality. Our Design, Manufacturing and Project Management facilities are amongst the best in the country.

We are headquartered in Mumbai, with a strong presence in Bangalore, Delhi, NCR, Kolkata, Ahmedabad, Hyderabad & Pune making us a true Pan India company. We have also expanded our operations and expertise to USA, Australia, Qatar, Sri Lanka, where we offer a full range of glazing systems & custom designed architectural metal works.

www.glasswallsystem.com

Board of Directors



Jawahar H. Hemrajani
Chairman & MD



Eshan J. Hemrajani
Director



Amit J. Hemrajani
Director

What we do :

- **GWS Engineers** : is a group company of Glass wall systems (I) pvt ltd who is a pioneer in Façade, head quartered in Mumbai, with a strong presence in Bangalore, Delhi, NCR, Kolkata, Ahmedabad, Hyderabad and Pune making us a true Pan India company. GWS engineers is engaged into manufacturing of steel fire rated and non-fire rated doors having the fire certification from CBRI and spectrum. We have a large and reputed client base across country which makes GWS a trusted brand in Industry.
- **M.J.Coaters** : A well known name in the field of Powder Coating, PVDF Coating and Wood finishing has introduced International Quality Architectural Coating in India. M.J. Group was incorporated in 1986 and since then has been operating in the field of Coating Application. The coating application done at our “State of the Art” ISO 9001:2015 certified plants in at par with the International Standards and Quality. www.mjcoaters.com

300+
Engineers

**PAN
INDIA
PRESENCE**

500+
Completed
projects

25000+
Installations



FIRE DOORS

Application areas

Stair case	Shaft (Electrical/Plumbing/Communication)	Hose reel
Internal partitions	Peripheral wall	Refugee areas

Fire Door Rating

1 Hr / 2 Hr

Fire door testing Std's

IS / BS

Single Shutter Fire Door



Double Shutter Fire Door



Single/Double shutter fire shaft door



Multi Purpose Non-Fire Rated Doors



ADVANTAGES OF STEEL DOORS



Fireproof



Bug-Insects
Free



Long durability



Secure & Safe



SINGLE LEAF DOOR



DOUBLE LEAF DOOR



Environment
Sustainable



Waterproof



Windproof



Sunproof

Glazed Fire Door And Partitions

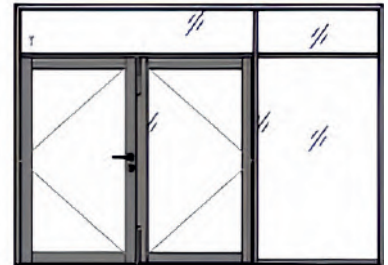
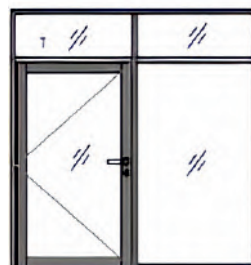
•Application Areas :

Commercial Complexes / Offices / Educational Institutes / Govt Offices / Data Centres / Lift Lobbies / Partition Walls / Staircase Areas.

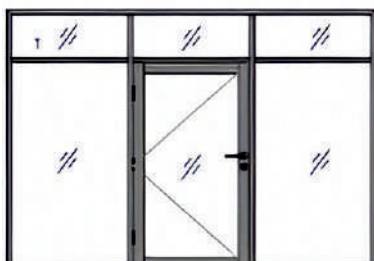


Door Features

- Slim Profile.
- Range of glass thickness – 8/10/11/12/14 (mm).
- All hardwares and accessories – fire rated.
- Certified from CBRI / Spectrum.
- Insulated / Uninsulated glass options.
- Non fire rated door also available for general application.
- Available in Latched and unlatched locking options with D Handle and Lever handles.



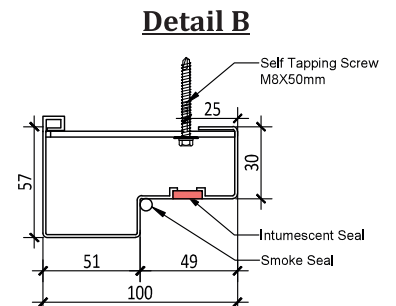
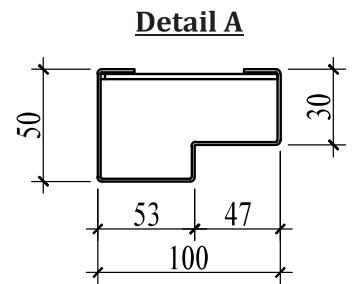
Door and partition design



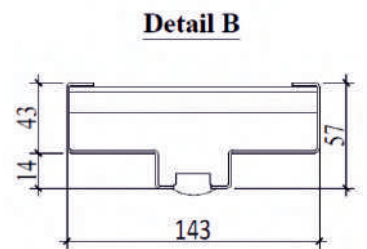
Door technical and specifications

Door Type	Steel Fire / Non Fire Rated Door
Criteria	Stability, Integrity and Insulation
Fire Rating	2 Hrs
Insulation	30 mins (Optional)
Testing Standards	IS 3614 / BS 476
Testing Laboratory	CBRI, NABL Accredited Labs.

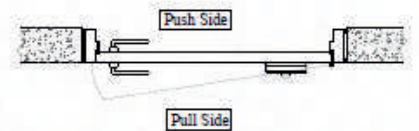
Frame Type	Single / Double Rebet
Frame profile	100*57/100*50/125*60/143*57/ 143*50
Frame sheet thickness (mm)	1.2 / 1.6
Shutter sheet thickness (mm)	0.8/1.2/1.5
Shutter thickness (mm)	46
Shutter Infill	Honeycoomb/Mineral wool*(Optional) /Still stiffened.
Frame Infill (Optional)	Honeycoomb/Mineral wool/PUF/ Mortar
Vision Glass (Fire rated) (mm)	Min 200x300(WxH), 6mm Schott/ Saint Gobain clear glass
Frame/Shutter material	Galvanised steel.
Paint	Powder coating-RAL Finish / Wood Finish 500+ hrs salt spray.
Shutter Type	Single/Double* Equal/Unequal leaf
Min Width (mm)	400mm
Max Height (mm)	2400mm * Fire rating
Accessories/ Hardware	CE marked - Fire rated
Gasket	Fire seal



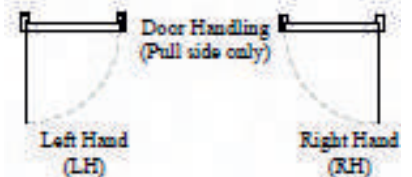
Detail of Frame :-
Frame Thickness 1.6 mm thk.



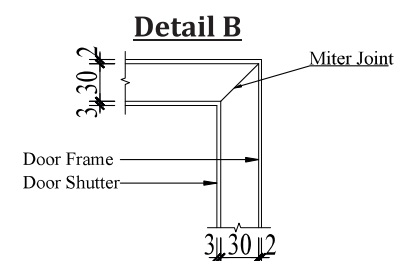
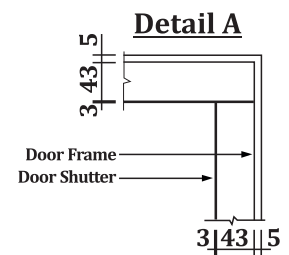
Top Elevation



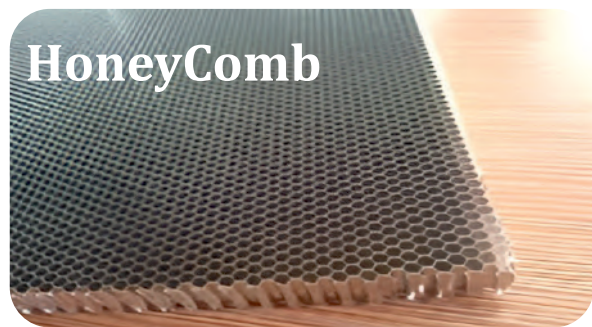
Opening Directions



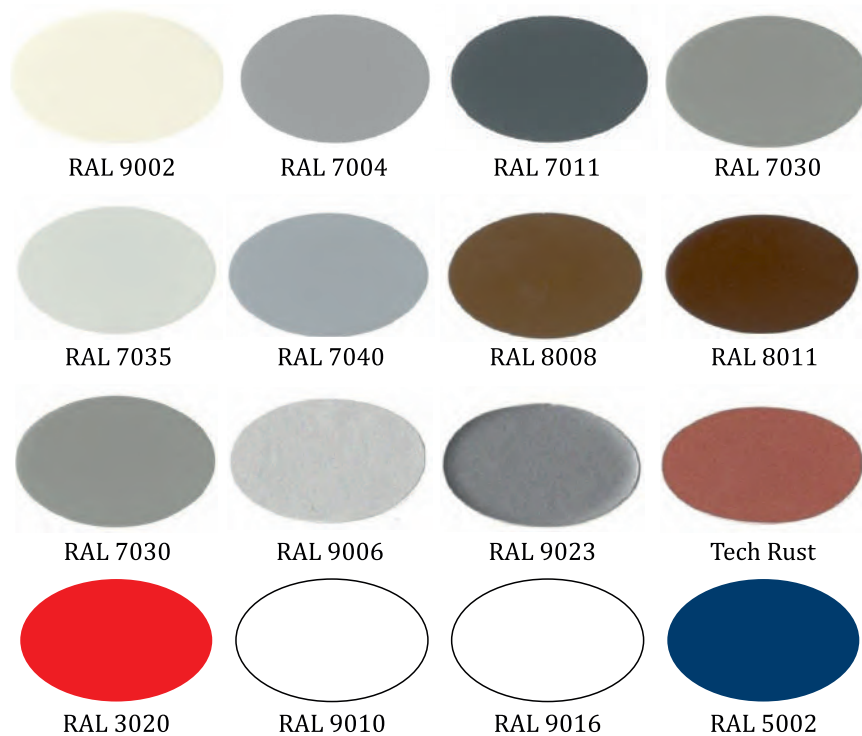
Frame Type



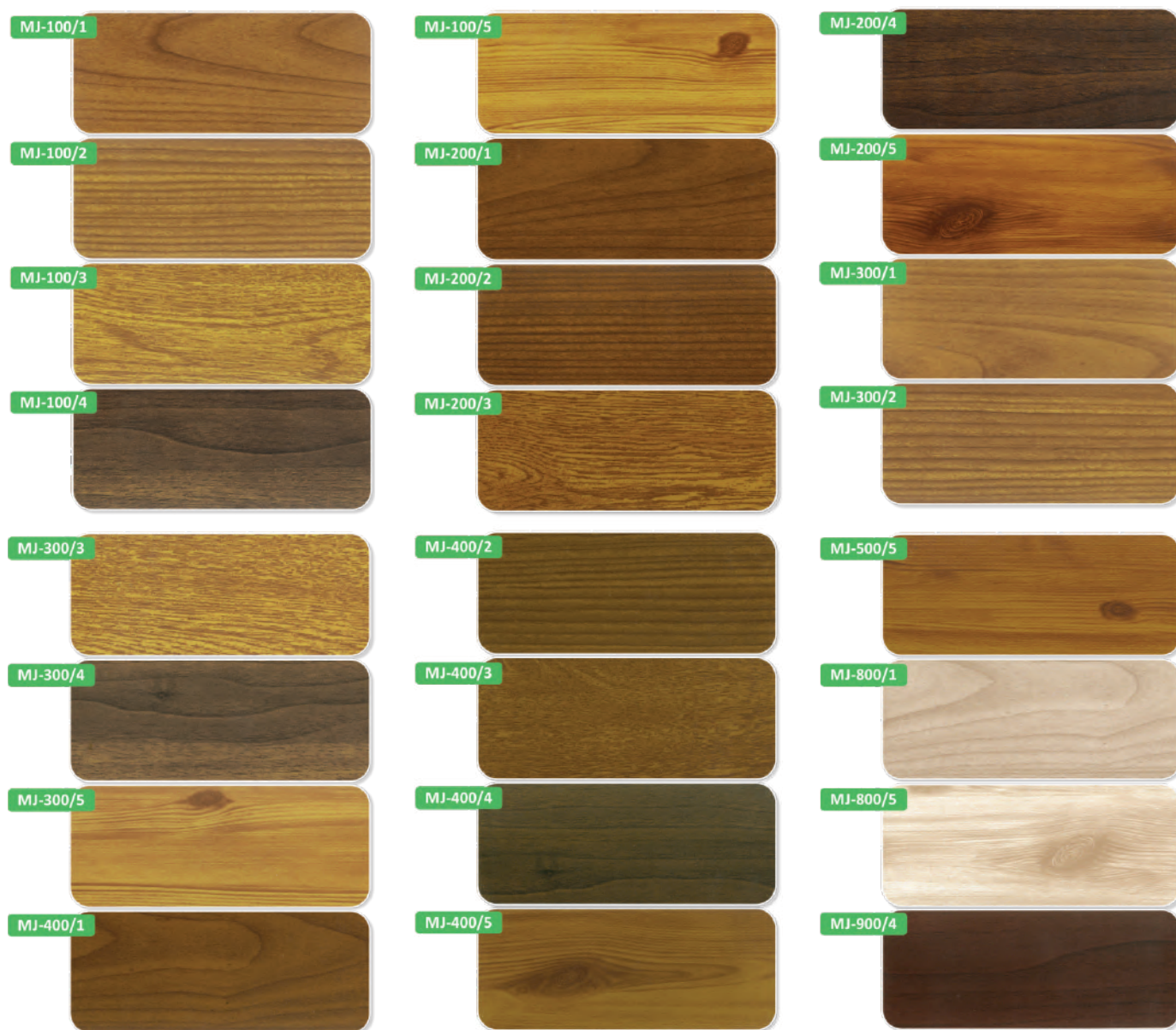
Infill Material



RAL Shades



Wood Finish



Door Hardware and Accessories: (Fire Rated)



Butt hinge



Concealed hinge



Cylindrical lock



Mortise sash lock



Mortise dead lock



D Handle(Pair)



H Type Pull handle



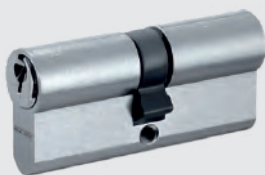
Offset Pull handle



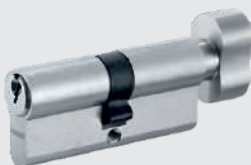
Lever handle-1



Lever handle-2



Euro cylinder key



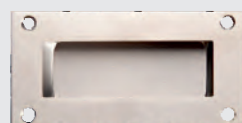
Euro cylinder Key/Knob



Half cylinder.



External trim



Flush handle



Concealed door bottom



Panic bar/ Push bar



Double point panic/ Push bar



Door closer



Hold open 80kg



Door closer link arm - 140Kg



Hold open link arm- 120kg



Dust proof socket

VISION

To be most respected, trusted & preferred Supplier in providing Quality products with timely delivery.

MISSION

To develop GWS Engineers & Fabricators as best sheet metal Service provider with Innovative products by giving highest priority to the customer needs.

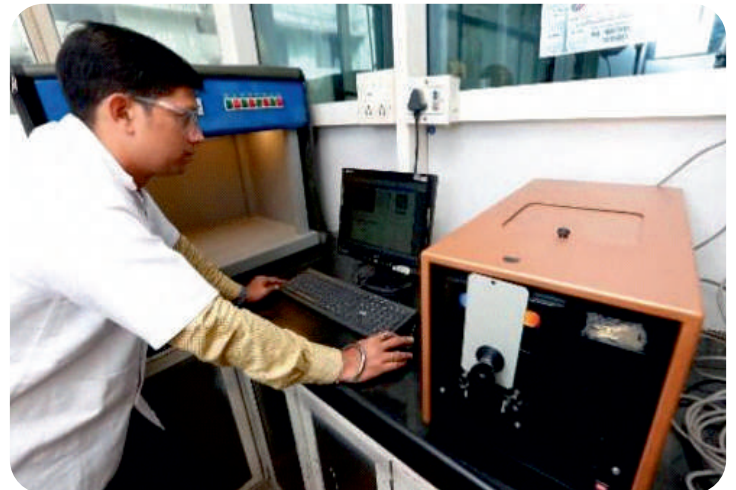
CORE VALUES

“Our growth & success based upon Ethical Practices, Integrity, Respect, Responsibility, Safety and Trust.”

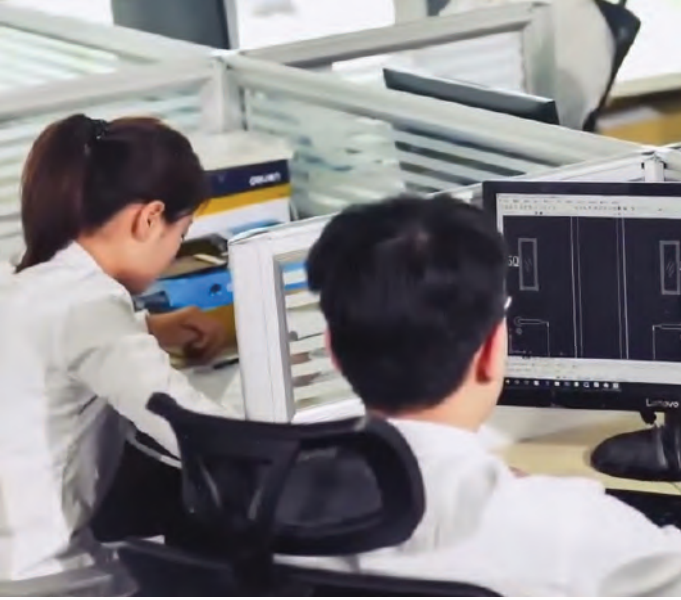
OUR CORE PILLARS

“Quality” “Reliability” & “Sustainability”

Strict in House Quality Checks



- Stringent raw material testing parameters.
- PDI (Pre Dispatch Inspection)
- Complied to industry standards.
- All backed by MTC's & third party certifications.



INFRASTRUCTURE

Dedicated on site project engineers – on time delivery & execution our “STRENGTH”



Our dedicated Installation & service engineers take utmost care of the end clients requirement. Understanding time is an essence of any project we are always committed to on time execution & deliverables.

In house qualified designers committed to deliver “the best to Industry”

Our qualified engineers R&D team is always committed to deliver the best product with optimum costing. R&D being a continuous process we always focus on continuous development of product and its components to the highest level of precision.



State of Art Manufacturing Setup



Having 2 manufacturing units we are committed to deliver the products on time as per customer requirement, world class machinery setup makes us highly efficient and a reliable partner in the industry

State of Art Powder Coating Setup

Having 3 powder coating setup makes us one of the leading and prominent partner with variety of options for customer to choose. Different RAL colors, Metallic finish and various options of wood finish make us different in today's customer centric market.



WE TAKE PRIDE TO BE ASSOCIATED WITH



STATE OF ART INFRASTRUCTURE



📍 A-512, Mahape MIDC, T.T.C. Thane -Belapur Road,
Navi Mumbai - 400710

☎ +91-89289 84439 / +91-95383 89898

✉ info@gwsengineers.com



www.gwsengineers.com

CONTACT US FOR DEALERSHIP